



BLAUFAST



01 – ABOUT BLAUBERG

BLAUBERG Group was founded in the state of Bavaria, Germany, with its headquarters located in Munich. It is a renowned European supplier, brand marketer, manufacturer, and system solution service provider for ventilation equipment, and is one of the globally renowned manufacturers of household ventilation products. Based on the mission of "improving indoor environment to enhance quality of life," BLAUBERG is continuously committed to enhancing air quality through technological research and development.

In 2014, BLAUBERG entered China and established BLAUBERG China branch, aiming to address the challenges of comfortable breathing for Chinese users. By providing every user with a truly constant oxygen, constant temperature, green, and healthy comfortable environment, BLAUBERG enables them to enjoy the beauty of breathing freely. Currently, BLAUBERG has established both online and offline sales networks, providing nationwide consumers with more timely and high-quality services.



BLAUFAST

BLACK  ORCHID™



PRODUCTION BASE



02 - BASE

N01 - HUNGARY, TATA

N02 - GERMANY, TRIER

N03 - GERMANY, MUNICH

N04 - UKRAINE, KIEV

N05 - POLAND, WROCLAW

N06 - POLAND, POZNAN

N07 - CHINA, SUZHOU

7 MAJOR PRODUCTION BASES
IN THE COUNTRY

BASE

SYSTEM



03 -SYSTEM

NEW MATERIAL, HEALTHIER AND MORE SUBSTANTIAL BLAUFAST SYSTEM.

The BLAUFAST system has undergone a comprehensive upgrade. Both pipelines and connectors are made of environmentally friendly new materials. The pipelines undergo rigorous environmental testing in authoritative laboratories for antibacterial properties, antibacterial durability, mold resistance, weather resistance, and absence of pollutants.

The Blaufast pipeline is made of HDPE material, a food-grade sterile pipeline, efficiently transporting clean air. The pipeline features a double-layer design, with the inner layer being smooth and containing an antibacterial coating.



The all-new Bruck round pipe utilizes high-end thermoplastic elastomer material, offering high toughness to meet high-quality ventilation requirements.

FLESH AIR
BLAUFAST



04 - Five Advantages



NEW MATERIALS

The main Bruck round pipe and Blaufast pipe connectors are all made of virgin materials. Everywhere the air touches is made of new materials.



TAILOR-MADE

The Blaufast system is tailored for BLAUBERG AHU, ensuring closer coordination with fresh air and more standardized system installation.



GLUE-FREE INSTALLATION

Continuing the adhesive-free installation technique of the Blaufast system, it employs full-length snap-in and hose clamp connections, eliminating the need for any glue.



EFFICIENT VENTILATION

Utilizing dual butterfly valves for precise airflow adjustment; with a gradient connection design to reduce air resistance, and smooth inner pipe walls, effectively enhancing the ventilation efficiency of the system.



ENVIRONMENTALLY FRIENDLY STERILIZATION

The round pipes are made of food-grade HDPE material, with an antibacterial coating on the inner walls, making it resistant to dust residue and bacterial growth. The entire system is installed using snap-in connections, eliminating the need for glue sealing.

05 - Accessories

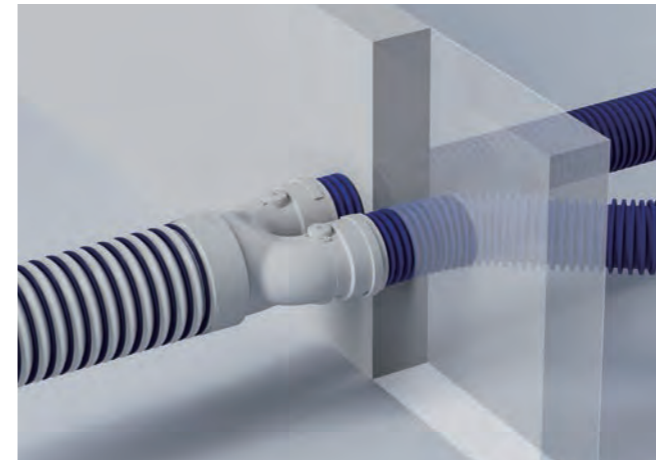
ALL-NEW UPGRADED ACCESSORIES

Newly developed a variety of accessories to address the complex environments of main unit installations, improving installation convenience, and resolving various installation challenges in multiple scenarios.



Multiple Pipeline Connections >

Cross beam
v



Connect the outdoor hood
v



Compatible with various sizes



Flange Diameter Change
Blaufast RF 150-110 C



Flange Diameter Change
Blaufast RF 125-110 C



Flange Diameter Change
Blaufast RF 125-150 C

THE ALL-NEW BRUCK ROUND PIPE

The all-new Bruck round pipe utilizes high-end thermoplastic elastomer material (TPV) in the industry. The seamless thermal fusion winding technology employed during manufacturing significantly enhances the air tightness of the pipeline. The flexibility of the Bruck pipe is achieved through the combination of air-cooling and water-cooling technologies, resulting in extremely high rebound efficiency. Additionally, the Bruck pipe boasts antibacterial properties, exceptional weather resistance, and tolerance to temperatures ranging from -40°C to 70°C. Coupled with BLAUBERG glue-free connection installation technique, it meets the requirements for comfortable and high-quality ventilation in homes.



BLAUBERG PIPELINE

The Blaufast pipeline is made of HDPE material, creating a food-grade sterile pipeline that efficiently transports clean air. Featuring a double-layer design, the inner layer is smooth and includes an antibacterial coating. Combining imported blue pipes with domestically produced red pipes meets a wider range of needs.



Blaufast	Producer	Material quality	Performance
Blue	Europe	HDPE	REACH, HY, Antibacterial, Antibacterial durability, Mold resistance, Antistatic, Weather resistance
Red Blue (BlauFast RK 110/40 C)	China	HDPE	Antibacterial, Antibacterial durability, Mold resistance, Antistatic, Weather resistance

AIR OUTLET CONNECTOR

All-new upgraded air outlet connectors, reducing the noise of the airflow; available in various sizes to meet a wider range of needs.



AIRFLOW CONTROL VALVE

Dual butterfly valve design with a wide range of valve adjustment angles, allowing for finer airflow control to evenly distribute air to each space, eliminating worries about airflow. The knob can be adjusted manually or with a screwdriver, making it more effortless.



06 - Installation

INSTALLATION REQUIRES CAUTION

Newly developed a variety of accessories to address the complexities of main unit installation, improving installation convenience, and solving various installation challenges in multiple scenarios.



01-The holes in the house beams are quite large. ❌



02-The quality of the pipeline material is poor. ❌



03-The glue causes secondary pollution indoors. ❌



04-Accumulation of dust inside the pipeline ❌

STAR-SHAPED INSTALLATION DESIGN

Star-shaped layout of pipelines not only saves installation space but also provides a more flexible design solution for whole-house ventilation, reducing airflow loss in the pipelines.



GLUE-FREE INSTALLATION

The main unit is connected to the Bruck pipe using throat clamps or with the use of reducer fittings. The connections between pipes utilize snap-in connectors with sealing rings, completely eliminating the need for any glue throughout the process.

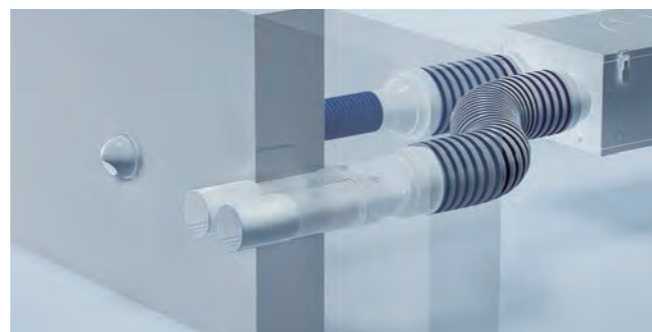
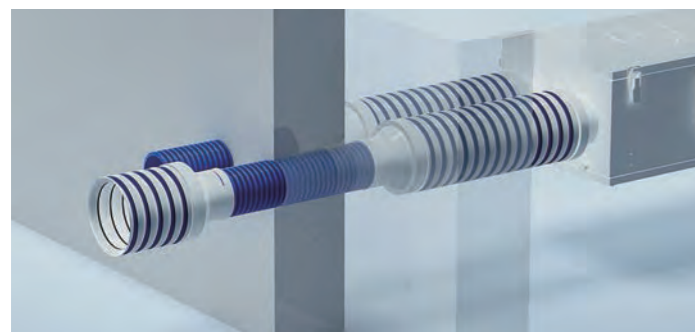


RING CLAMP CONNECTION

The pipes and fittings are connected using a direct-insertion ring clamp connection. There's no need to remove the ring clamp; just insert it directly. This ensures you don't have to worry about losing the ring clamp during installation, making the process more convenient.

WALL-PENETRATING BEAM SOLUTION

Multiple types of three-way reducers to adapt to a wider range of installation scenarios. There are more solutions available for wall penetration through beams, making air intake less challenging.



PROFESSIONAL CLEANING

The ducts that transport fresh air may accumulate a small amount of dust on their walls over long-term use, necessitating cleaning. Blaufast pipelines can be cleaned using professional cleaning equipment, making maintenance much simpler.



Pipeline endoscope



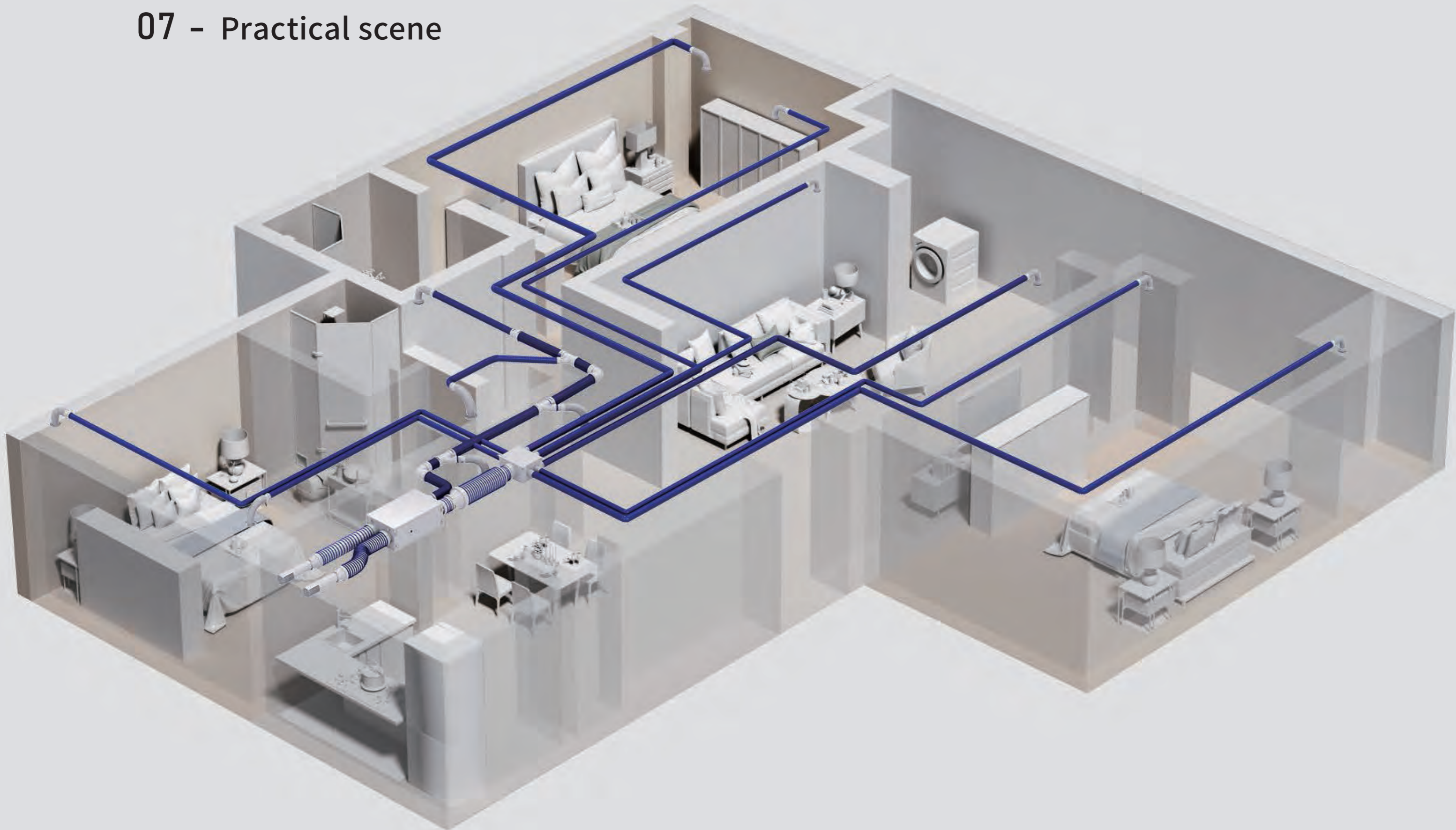
M5 Electric rotary axis cleaning brush



Mini manual cleaning equipment



07 - Practical scene



08 – Test Report

1) HY TEST REPORT

The German HY hygiene standard certification is completed by a research institute established in Germany in 1901, which is dedicated to environmental hygiene and virology research. It is one of the largest and most modern institutions in the field in Europe.

2) EU REACH CERTIFICATION FOR ENVIRONMENTALLY FRIENDLY MATERIALS

The REACH regulation is a regulatory framework established by the European Union for the preventive management of all chemicals entering its market. Products not included in this management system cannot be sold in the EU market.

3) ANTIBACTERIAL PERFORMANCE

Antibacterial Test Report Number: WJ20214217

4) ANTIBACTERIAL DURABILITY PERFORMANCE

Antibacterial Durability Test Report Number: WJ20214218

5) ANTISTATIC PERFORMANCE

RoHS Testing Report Number:WTF21H1131452C-1

6) ROHS POLLUTANT-FREE TESTING

RoHS Testing Report Number:WTF21H1131452C-1

7) MOLD RESISTANCE PERFORMANCE

Mold Resistance Test Report Number:WJ20214216

8) WEATHER RESISTANCE PERFORMANCE

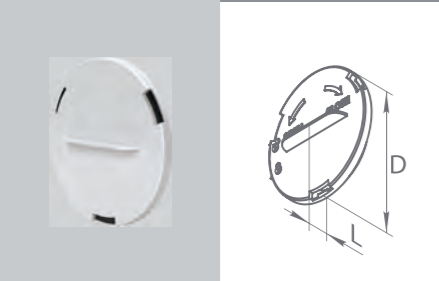
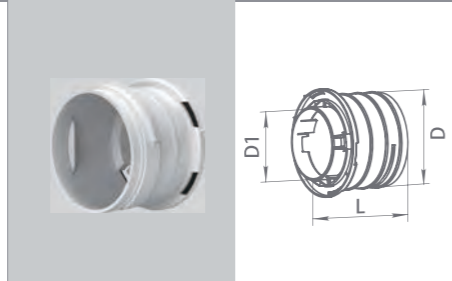
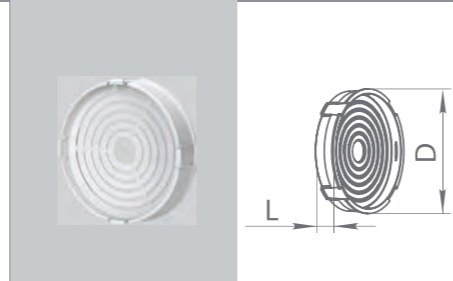
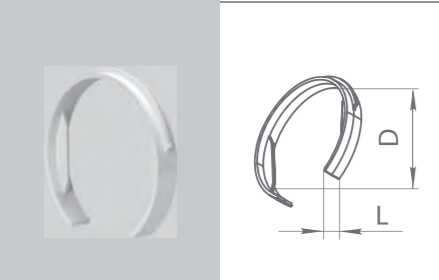
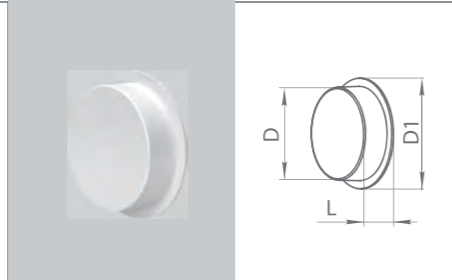
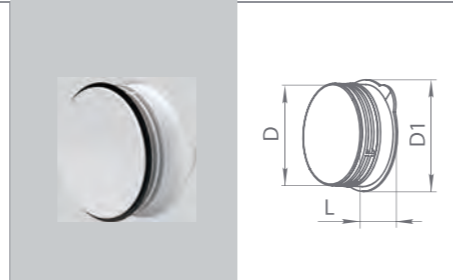
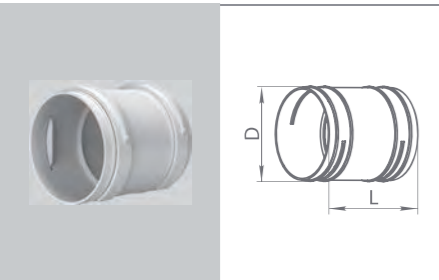
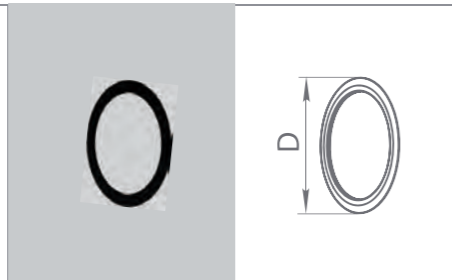
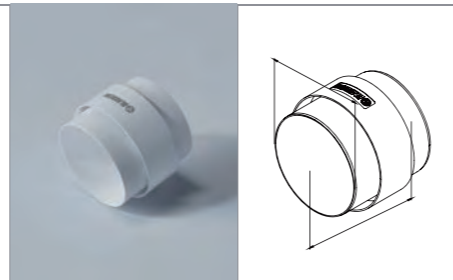
Tested by BLAUBERG Laboratory
(High-Low Temperature Cycling Test -40°C to 70°C)



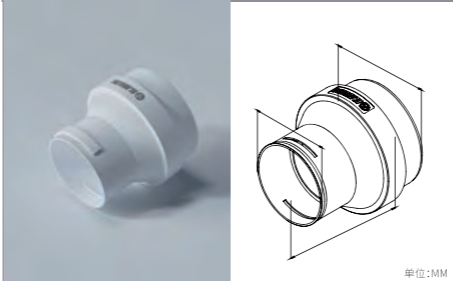
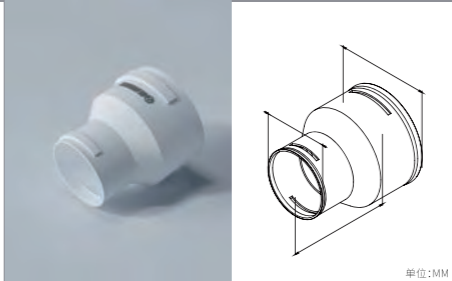
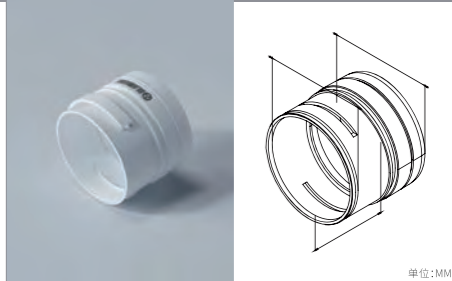
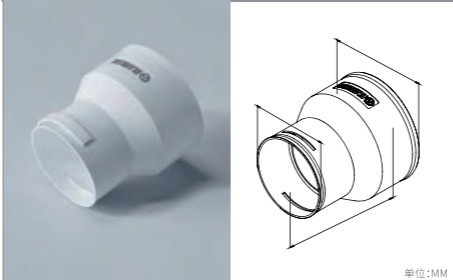
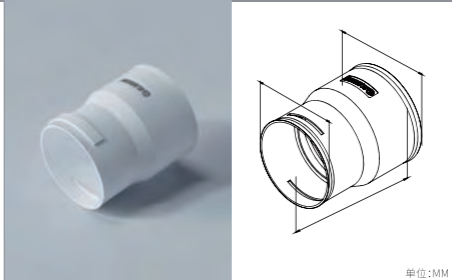
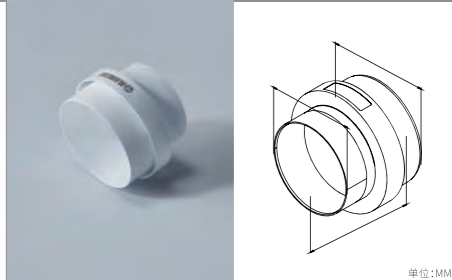
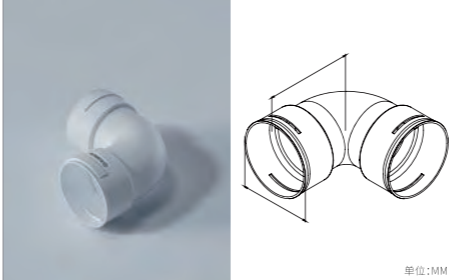
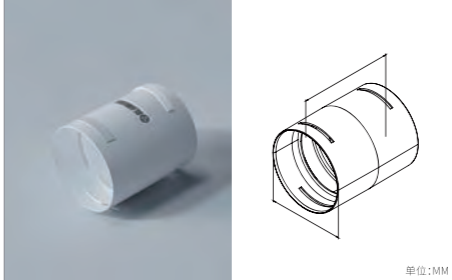
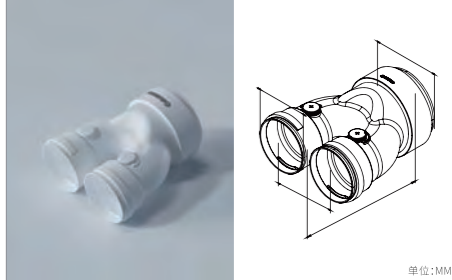
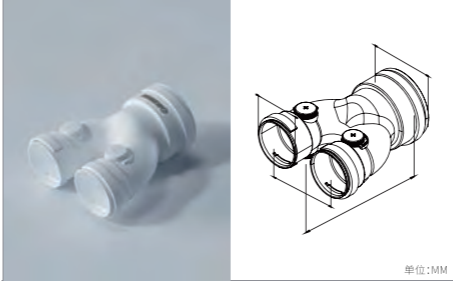
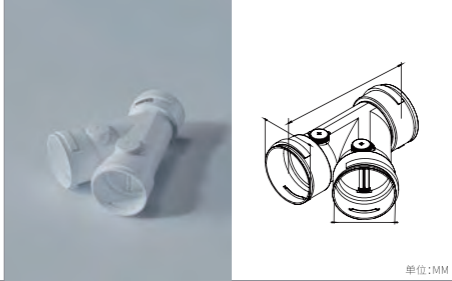
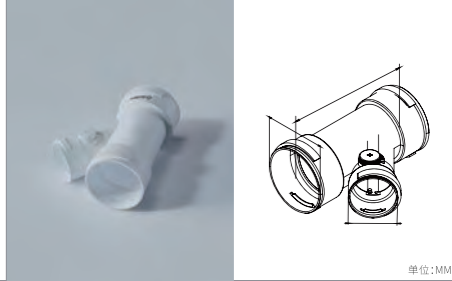
09 – Pipeline and accessory model parameters

Ventilation ducts																	
Bruck round pipe BLAFAST RBK 150 C	Blaufast tube			Blaufast made in China													
	MODEL	Maximum bending radius [mm]	D [mm]	L [m]	MODEL	Maximum bending radius [mm]	D [mm]	L [m]									
	BlauFast RK 63/50	130	63	50	BlauFast RK 63/50C	130	63	50									
	BlauFast RK 75/50	150	75	50	BlauFast RK 75/50C	150	75	50									
					BlauFast RK 110/40 01 C	/	110	40									
Ventilation ducts				distributing box													
Blaufast made in China		One-to-four draught distributing box			One-to-six draught distributing box												
MODEL	D [mm]	L [m]	MODEL	D [mm]	D1 [mm]	L [mm]	A [mm]	H [mm]	MODEL	D [mm]	D1 [mm]	L [mm]	A [mm]	H [mm]			
BlauFast RK 125/3.5 C	125	3.5	BlauFast SR 125/63*4C	55	125	350	300	200	BlauFast SR 125/63x6 02	54.5	124	300	400	202			
BlauFast RK 110/40 C	110	40	BlauFast SR 125/63*4C	67	125	350	300	200	BlauFast SR 125/75x6 02	67	124	300	400	202			
distributing box																	
One-to-eight draught distributing box			One-to-ten draught distributing box			One-to-fourteen draught distributing box											
MODEL	D [mm]	D1 [mm]	L [mm]	A [mm]	H [mm]	MODEL	D [mm]	D1 [mm]	L [mm]	A [mm]	H [mm]	MODEL	D [mm]	D1 [mm]	L [mm]	A [mm]	H [mm]
BlauFast SR 150/63*8C	54.5	150	350	300	200	BlauFast SR 160/63*10 01	54.5	159	500	500	202	BlauFast SR 150/63*14C	54.5	150	300	350	200
BlauFast SR 150/75*8C	67	150	350	300	200	BlauFast SR 160/75*10 01	67	159	500	500	202	BlauFast SR 150/75*14C	67	150	300	350	

09 - Pipeline and accessory model parameters

Draught distributing box accessories										
										
Round duct branch box with plug			Round duct branch box connector			Round duct volume control damper				
MODEL	D [mm]	L [mm]	MODEL	D [mm]	D1 [mm]	L [mm]	MODEL	D1 [mm]	A [mm]	
BlauFast RSP 63	84	29	BlauFast RKF 63	74	54	77	BlauFast RD 63	50	14	
BlauFast RSP 75	96	29	BlauFast RKF 75	86	66	77	BlauFast RD 75	62	14	
Draught distributing box accessories										
										
Clamp ring			Round duct dust cover			Round duct plug				
MODEL	D [mm]	L [mm]	MODEL	D [mm]	D1 [mm]	L [mm]	MODEL	D [mm]	D1 [mm]	L [mm]
BlauFast RS 63	68	13	BlauFast RKP 63	51.4	63	20	BlauFast RD 63	69	80	30
BlauFast RS 75	84	13	BlauFast RKP 75	63.2	75	20	BlauFast RD 75	77	95	32
Pipeline accessories										
										
Round pipe connectors			Round pipe sealing ring			Round pipe flange diameter change				
MODEL	D [mm]	L [mm]	MODEL	D [mm]		BlauFast RM 150 C				
BlauFast RM 63	70	95	BlauFast RL 63	67						
BlauFast RM 75	79	95	BlauFast RL 75	79						
			BlauFast RL 110 C	112						

09 - Pipeline and accessory model parameters

Pipeline accessories					
					
Round pipe flange diameter change BlauFast RE 150-110 C		Round pipe flange diameter change BlauFast RE 110-75 C		Round pipe flange diameter change BlauFast RE 75-63 C	
Pipeline accessories					
					
Flange diameter change BlauFast RF 150-110 C		Flange diameter change BlauFast RF 125-110 C		Flange diameter change BlauFast RF 125-150 C	
Pipeline accessories					
					
Round pipe elbow BlauFast RB 110 C		Round pipe connectors BlauFast RM 110 C		Y-shaped three-way (with valve) BlauFast RYT 150/110*2 C	
Pipeline accessories					
					
Y-shaped three-way (with valve) BlauFast RYT 110/75*2 C		Diagonal three-way (with valve) BlauFast RXT 110/110/110 C		Diagonal three-way (with valve) BlauFast RXT 110/110/75 C	

09 - Pipeline and accessory model parameters

Pipeline accessories															
Air outlet connector BlauFast RPZ 75/80 C		Air outlet connector BlauFast RPZ 75/100 C		Air outlet connector BlauFast RPZ 110/100 C											
Pipeline accessories				Installation accessories											
Air outlet connector				Round pipe clamp		Round pipe clamp		Round pipe clamp		Round pipe clamp					
MODEL	D [mm]	D1 [mm]	L [mm]	MODEL	D [mm]	L [mm]	MODEL	D [mm]	L [mm]	MODEL	D [mm]				
BlauFast RPZ 63/80-1 C	92	63	690	BlauFast RPC 75 C	77	40	BlauFast RPC 110 C	112	40	BlauFast RPC 150 C	162				
				BlauFast RPC 63 C	63	40									
Installation accessories				Vent											
Silencer pipe				Indoor air vent				Indoor air vent							
MODEL	D [mm]	D1 [mm]	L [mm]	L1 [mm]	Weight [kg]	MODEL	D [mm]	B [mm]	L [mm]	A [mm]	MODEL	D [mm]	D1 [mm]	L [mm]	A [mm]
SDF 125/600	124	270	600	55	2.0	VPR 80	80	90	18	132	VMR 100	99	123	75	128
SDF 160/600	159	270	600	55	2.1	VPR 100	100	90	28	148	VMR 125	124	152	100	154
SDF 200/900	199	320	900	55	3.9						VMR 150	149	173	128	184

09 - Pipeline and accessory model parameters

Vent									
Indoor air vent		Indoor air vent		Outdoor air vent		Outdoor air vent		Outdoor air vent	
MODEL	D [mm]	L [mm]	MODEL	D [mm]	L [mm]	MODEL	a [mm]	b [mm]	l [mm]
VPE 80 C	124	88	VPE 80 C No adjustable valve	124	88	Decor 185x185/150 H	186	142	15
							L1 [mm]	L2 [mm]	D [mm]
							50	101	150
风口					EPP管道				
Indoor air vent		Indoor air vent		EPP air duct		EPP air duct		EPP air duct	
MODEL	D [mm]	L [mm]	MODEL	Internal diameter [mm]	External diameter [mm]	length [mm]	MODEL	Internal diameter [mm]	External diameter [mm]
VPU 80 C	78	143	VPU 100 C	95	164	1000	DN150*1000	150	195
						1000	DN125*1000	125	150
						1000			
EPP管道					EPP管道				
EPP elbow		EPP connector		EPP three-way		EPP three-way		EPP three-way	
MODEL	Internal diameter [mm]	External diameter [mm]	MODEL	Internal diameter [mm]	External diameter [mm]	MODEL	Internal diameter [mm]	External diameter [mm]	External diameter [mm]
DN150	150	180	DN150	180	213	DN150	180	213	213
DN125	125	150	DN125	150	173	DN125	150	173	173

Blauberg Group AG
Aidenbachstr. 52, 81379 München, Germany
Blauberg Ventilatoren GmbH China Office

Phone: +86 400-825-0508
Website: www.blauberg.cn
Version number: 302010025-2405

• **The final interpretation rights belong to Blauberg** •

The images and text in this promotional material are for reference only. The specific machines, accessory combinations, etc., are subject to the final contract with Blauberg authorized dealers. The technical parameters and data advertised are based on tests conducted by Blauberg Laboratories and national-level laboratories.